

Breast Cancer Death Rates (per 100,000) (2019)

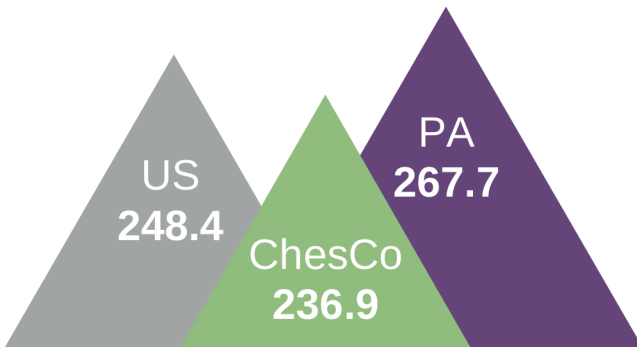


Pennsylvania

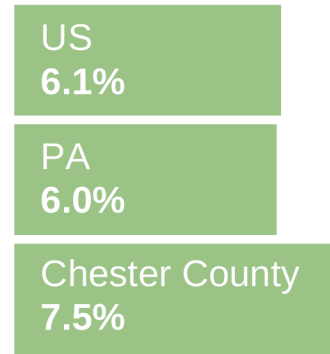


Chester County

Heart Disease Death Rates (per 100,000) (2019)



Suicide Rates Among Women (2019)

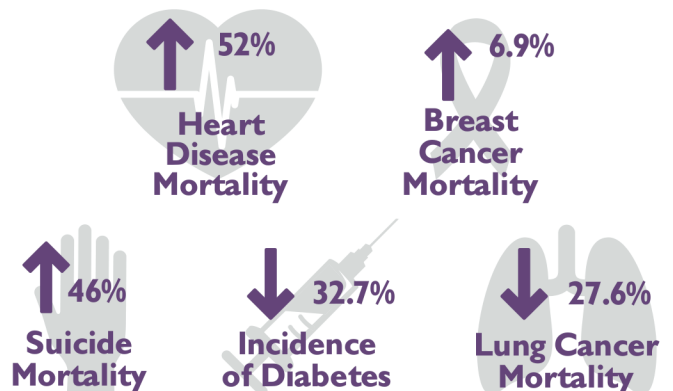


From 2017 to 2019, **44% of women in PA** were more likely to experience one or more poor mental health days compared to 33% of men. In Chester County, **42% of women** experienced one or more poor mental health days compared to 33% of men.

Black women are more likely than any other racial or ethnic group of women to die from cancer in the US, Pennsylvania, and Chester County.

What Has Changed (2015 vs. 2019, Chester County)

(2015 vs. 2019, Chester County)



What The Fund Will Do

FUND programs and organizations addressing our community-identified priority areas, specifically the area of promoting health and wellness by addressing needs specifically related to the health of women and girls.

EDUCATE the community about the findings of the Blueprint Report through informative events, print and social media.

CONVENE women's groups, organizations, community members and other stakeholders to develop a collective plan to promote women's health.

ADVOCATE by informing legislators how policies and programs impact women's health and access to care.



What You Can Do **Support policies and programs that:**

- Provide culturally competent and equitable health care for historically marginalized racial and ethnic groups and the LGBTQ+ population.
- Support research on disparities in health care and health outcomes in historically marginalized racial and ethnic groups and in the LGBTQ+ population.
- Recruit and retain Black people as well as other people of color into medical school programs and healthcare professions.
- Integrate health considerations into programs and policies across sectors to promote a shared goal of improving the health of communities.
- Support the adoption of the National Standards for Culturally and Linguistically Appropriate Services (CLAS) in health care facilities and other culturally competent training for health care providers.
- Protect people from discrimination based on sexual orientation and gender identity.
- Guarantee access to health care coverage for lesbian, bisexual, and transgender women.
- Promote equality in all facets of life since these factors are also related to health outcomes.
- Monitor health status indicators and outcomes to inform data-driven decision making and evaluate effectiveness of programs and policies.



The Fund for Women and Girls leads and unites the community through philanthropy and advocacy to ensure that women and girls have resources and opportunities to thrive. For the full Blueprint Report: www.thefundcc.org/research